

JUNE 2014



Tee Times

June 1
Battle of the Sexes
11:00 Shotgun

June 8
Horse Race
1:00 Start

June 22
Junior-Senior
8:00 Shotgun

July 1
Ladies Invitational

July 8—10
Women's & Men's
Senior
Club Championship

July 25th—26th
Otto Cup

August 3
Husband Wife
12:00 Shotgun

August 16th & 17th
Club Championship

August 30
Member-Member
Tournament
8:30 Shotgun

September 14
Lakes & Links
12:00 Shotgun

Let's play **GOLF!**



GOLF NOTES:

- On busy days, if you are a 2 some, we will pair you up if needed to make the most of our tee times and put more golfers on the course.
- When paying cash at the bar please let the bar staff know you are members so you get you 10% discount and we can track sales properly



GOLF SHOP TALK

Spring has sprung and golf season is here! The Golf Shop is receiving new merchandise regularly, so come on in and freshen up your golf wardrobe.

We have rain and wind gear, stylish shoe options, sweaters, sweatshirts, flashy golf shirts for the men and fashionable gear for the ladies—including a selection of Jamie Sadock!

Be sure to pick up one of our insulated drink bottles—hot or cold—these bottles hold their temperature, are brightly colored and bear our GCC logo! They were so popular last year we brought them back and have more colors from which to choose.

Feel free to contact someone in the Golf Shop anytime with news or interesting items for the newsletter. We will be happy to publish your tidbits!

Enjoy your summer at

Hole In One Club

Every year a handful of skilled (and lucky!) members hits an ace on our lovely course. When it's YOUR turn don't miss out on the big payout!

Make sure you are in the Hole-In-One Club! The last hole-in-one paid \$605!!!



HORSE RACE 2014

June 8th—1:00pm

Open to all players sign up sheets are on the Member Board
Appetizers will be served at the finish line!



2014 Otto Cup

June 25th and 26th

Be sure to sign up in the Pro Shop
as soon as possible if you want to play!
\$300—Member-Guest, \$400—Guest-Guest



2014 Board Meeting Schedule:

June 17 6pm

July 15 6pm

August 19 6pm, Informational Meeting 7pm

September 16 6pm

October 14 6pm, Annual Membership Meeting 7pm



2014 Gaylord CC Board of Directors

Jim Blake, President (2015)

Dan Hlywa, VP (2015)

Walt Keskine, Treasurer
(2014)

Don Theisen, Secretary (2016)

Jan Palmbo, Director (2014)

Ron Race, Director (2015)

Jim Still, Director (2016)

Michele Andrews, Director
(2014)

Jim Hilgendorf, Director (2016)

Ladies' Clinics with JT

10-11am

May 23, 30

June 6, 13, 20, 27

\$10 each

Call the Pro Shop to sign up!

JUNIOR CLINICS

For ages 9—17

Includes 1 hr instruction with
Rob and lunch!

10:30—12pm

June 12, 19, 26, July 10, 17

Call the Pro Shop for more info!
\$10/session or \$40/series pre-
paid

2014 CLUBHOUSE STAFF

Head Golf Professional: J.T. AUDE—jtaude@yahoo.com

Pro Shop Staff: Rob Diroff, Bobette Friend,
Carl Richter, Jodi Wagner

Dining Room/Kitchen/Bar: Tom, Jim, Leah, Bobbee, Chelsea,
Dugan, Karlie, Hope

Outside/Cart Staff: Evan, Jay, Kayley, Cameron, Lucas,
Logan, Hannah, Jacquelyn, Shelby
and Britney

We have new staff this year please be patient we are still in
training thank you.

**Please let any of us know how we can help make your
season at Gaylord Country Club a most enjoyable one!**



Be sure to welcome these new
members to the
Gaylord Country Club Family!

Doug Konieczny
Mark & Carol Foucher
Tom & Brenda Loshaw
Bill Forreider

Euchre Nights

They Start June 11th. Bob & Judy Graczyk & Rod & Lois Summers will cohost this year. A potluck dinner will precede cards, and we are asking you to include the dish you are going to bring.

Dinner 6:30

Cards 7:15

Singles and Couples are Welcome

Parent Child League

Starts June 3rd

5:30 Shotgun

\$15 for Members

Includes golf and dinner

Per team

Call for information

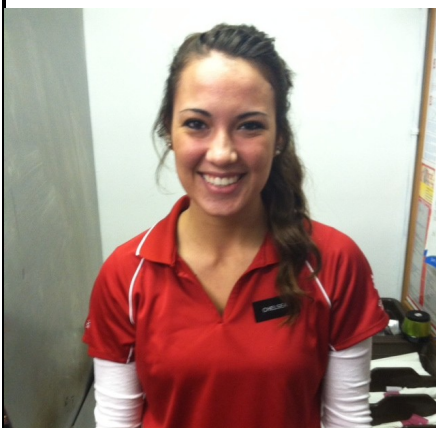
2014 CLUBHOUSE STAFF



Leah



Bobbee



Chelsea



Dugan



GAYLORD
COUNTRY CLUB
EST. 1924

Beautification Committee

Carol Bragdon
Cal O'Dras
Nancy Pike
Peggy Stafford
Mary Keskine
Doris Pidd
Marilyn Keyes
Carolyn Irvin
Betsy Mullen
Joan Shaffer
Walt Keskine Liason

Personnel

Jim Hilgendorf

Marketing & Membership

Dan Hlywa

Greens & Tees

Don Theisen
Vern Cavitch
Jim Carpenter

Equipment

Ron Race

Food & Beverage

Jan Palmbo
Judy Graczyk
Sandy Blake
Donna Theisen

House

Jim Still
Carol Hill
Bob Graczyk
Jane Baker
Pat Kassuba
Boots Still

Finance/Planning

Michele Andrews

Administration/Events/Handicaps

Jim Blake

